

LOVE LIFE, LOVE
BRISTOL & WESTON



NHS
University Hospitals
Bristol and Weston
NHS Foundation Trust

TRAINEE NURSING ASSOCIATE (TNA) APPRENTICESHIP



Prefer to speak to someone? Meet our Recruitment Lead and Learning Education Facilitator at one of our September Drop-in events, located in the BHI Atrium:

Monday(s) 7th, 14th, 21st from 2:30-3:30pm

OR Thursday(s) 10th, 17th, 24th from 10:30-11:30am





TRAINEE NURSING ASSOCIATE QUESTIONS & ANSWERS



This is a new nursing support role that will bridge the gap between the role of a Clinical Support Worker and a graduate Registered Nurse, providing a workforce for future healthcare.

WHAT QUALIFICATIONS DO I NEED TO APPLY FOR THE NURSING ASSOCIATE APPRENTICESHIP AT UWE?

- GCSEs Grade C or above in Maths and English Language/New GCSE Grade 4-9 in Maths and English Language OR Functional Skills Level 2 in Maths and English or equivalent (not entry Level 2)
- NVQ Level 3/BTEC or equivalent in any subject
- Must be employed in a healthcare role
- You will also need to demonstrate your ability to study to Level 5 foundation degree and commit to completing the Nursing Associate Apprenticeship programme
- Disclosure and Barring service check, and occupational health confirmation that is dated within the previous 12 months (employer requirement)

If you do not have the qualifications required, you will not be able to apply today, however if you work for the Trust then contact our Education team by emailing SkillsHub@uhbw.nhs.uk - the team will provide you with support and advice on how to gain the qualifications required to apply for a future cohort.

WHAT BAND WILL I GET PAID AS A TRAINEE NURSING ASSOCIATE?

The Nursing Associate apprenticeship is a minimum of a 2-year programme and you will be paid a Band 3 throughout the apprenticeship.

WHAT BAND WILL I GET PAID AS A NURSING ASSOCIATE?

Under Agenda for Change, the Nursing Associate role will be a Band 4.

I AM A BAND 3 NA; CAN I APPLY TO BE A TRAINEE NURSING ASSOCIATE? WHAT WILL I GET PAID?

Yes you can apply. You will continue to be paid on your current Band 3 for the duration of the programme.

AM I ELIGIBLE TO APPLY FOR A STUDENT LOAN WHILST DOING THE APPRENTICESHIP?

Funding from the Student Loans Company is not available for apprenticeship programmes. This is because government funding for apprenticeships is provided directly to the employer and is used to cover all or part of the tuition fees for the course.

WHO WILL PAY FOR THE COST OF MY TRAINING?

Your university fees for the programme will be paid via the apprenticeship levy.





TRAINEE NURSING QUESTIONS & ANSWERS



CAN I CHOOSE WHICH UNIVERSITY I ATTEND?

TNAs will be able to access a range of support throughout their studies from UWE. Including study skills, researching evidence and wellbeing services.

I HAVEN'T STUDIED FOR A LONG TIME, WHAT LEVEL OF STUDY SKILLS SUPPORT WILL I RECEIVE FROM THE UNIVERSITY?

TNAs will be provided with support throughout their studies. This will include a Clinical Educator/Personal Tutor who will be able to support you throughout the programme. The university also have comprehensive wellbeing services to support you.

HOW LONG IS THE COURSE?

2 years.



CAN I TRAIN PART-TIME AS A TNA?

No, this is a full-time course and you will be required to be employed full-time in a fixed-term 2-year post (37.5hrs per week).

HOW MUCH TIME WILL I BE AT UNIVERSITY AND WILL I GO ON PLACEMENTS?

You will spend one day a week at university, which is 20% of the time. You will also spend 20% of your time on clinical placements, such as community or paediatric settings in order to gain a broad nursing knowledge. The clinical placements are likely to be in week blocks, though this is currently under review by the Trust. The remaining 60% of the time will be on your base or host ward or department. It is essential that you can be flexible with regard to shifts in order to fit in with the requirements of the different placements you will be required to complete.

CAN I CHOOSE WHICH WARD WILL BE MY HOST WARD?

The Adult Nursing divisions will be recruiting for the TNA programme starting in Feb 2021. The divisions are Medical, Surgical and Specialised Services all based in Bristol. Participating wards are selected by the Senior Nursing team and ward selection is based on which environment is able to offer required support to a TNA, through their training.

HOW WILL I BE SUPPORTED DURING CLINICAL PLACEMENTS?

You will be supported in Practice by a Practice Assessor and Practice Supervisors, as well as the line manager on your host ward. Jenny Steele is the Learning Education Facilitator for TNA Support.





HOW WILL I BE ASSESSED DURING THE NURSING ASSOCIATE APPRENTICESHIP?

Throughout the apprenticeship you will be assessed in both your clinical placements and in the university. You will be supported during the program to develop these skills. You will be assessed using the following methods:

- Practice assessments
- Exams
- Essays
- Presentations
- OSCE (Objective Structured Clinical Exam) Viva

WHEN WILL I BE ABLE TO TAKE MY HOLIDAYS?

Holiday requests should be arranged with your line manager as normal but should take into account university days and clinical placements. There is some flexibility.

HOW MANY HOURS OF STUDY WILL I BE EXPECTED TO UNDERTAKE IN MY OWN TIME?

You will be expected to spend a proportion of your time outside of your rostered working and university hours to undertake additional study to support the achievement of your learning outcomes. This would normally require an additional 5-15 hours of study per week, although this will vary from person to person. You will be expected to prioritise and manage your own workload to meet the demands of academic study.

WHAT HAPPENS AFTER I QUALIFY AT THE END OF THE PROGRAMME?

You will be eligible to apply for Band 4 Nursing Associate jobs after you have received your NMC registration.

WILL THE REGISTERED NURSING ASSOCIATE ROLE BE REGULATED?

Yes the Nursing Associate role will be regulated by the NMC in England.

CAN I USE A REGISTERED NURSING ASSOCIATE QUALIFICATION TO ACCESS PRE-REGISTRATION NURSE TRAINING?

Yes. As a Registered Nursing Associate your Foundation Degree apprenticeship will APEL towards the pre-registration Nurse training. Registered Nursing Associates will have an opportunity to apply for a graduate pre-registration programme. Registered Nursing Associates may also have an opportunity to apply for a Degree Nurse apprenticeship, if their respective organisation offers the apprenticeship and they meet the academic requirements.



How do I apply?

There will be adverts on Connect, posters, and check our vacancy website regularly.
www.uhbwcareers.nhs.uk/tna



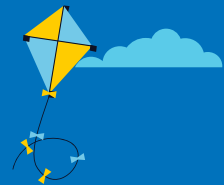
University Hospitals
Bristol and Weston
NHS Foundation Trust



University Hospitals Bristol and Weston NHS Foundation Trust

Trust Headquarters,
Marlborough Street,
Bristol, BS1 3NU

www.uhbwcareers.nhs.uk/tna



Respecting everyone
Embracing change
Recognising success
Working together
Our hospitals.

